

## SL1188P

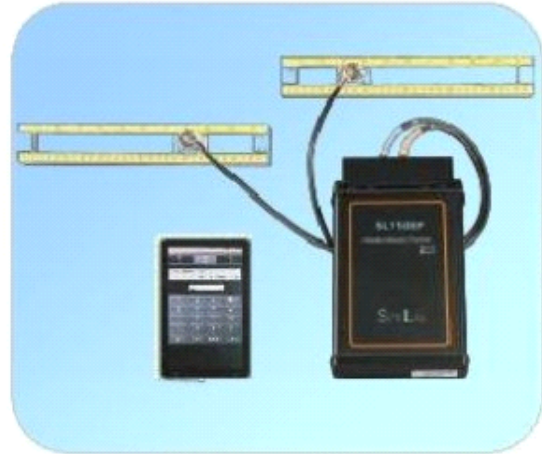
Portable Ultrasonic Flowmeter

Rev. 2013/01/10

### Description

Model SL1188P is a Portable Ultrasonic Meter. It collects Flow Data via a TPC (Tablet PC), and uses "UFM" software to download the Flow Data.

The SL1188P Portable Ultrasonic Flow Meter consists of flow sensors (ultrasonic), a flow transmitter and a Tablet Personal Computer (TPC). The Model SL1188P Portable Ultrasonic Flow-meter is the only flowmeter for which operation is a specialty between the electronics and operational interface. The SL1188P package has convenient magnetized transducer racks, good operational interface, and high memory card. It is designed to be user friendly, and even in the worst industrial environments, it is well protected by its high-strength impact resistant case with rubber ring seals and NEMA4 rating. Even if it is dropped into water it should continue to work normally. It is a portable flowmeter made with expertise.



### Parameters

Data storage: 1GB (512 days)  
Cable signal attenuation: -0.9dB/100m  
Cable tensile strength: 300 Newtons  
Rise/fall time: 40 picoseconds  
Transducer installation time: 55s  
Portable transducer rack magnetic force:  
200 Newtons  
Bluetooth communications Distance: up to  
160ft (50m)

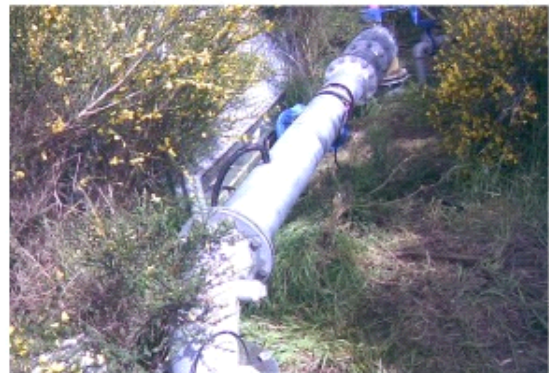
### Specifications

#### Transmitter (standard):

Flow range: 0~±40ft/s (0~±12m/s)  
Accuracy: ±0.5% of reading; ±1.5~± 16ft/s (±0.5~±5m/s)  
Repeatability: 0.15%  
Power supply: internal lithium battery with 8 hours of use  
Output: 4~20mA, maximum 750Ω  
Power consumption: 1W  
Weight: 3.3lbs (1.5kg)

#### P type Transducers (magnetic clamp-on)

Measurement Pipe range: 1in to 200 in (25mm~5000mm)  
Protection rating: IP68  
Temperature range: -40F~176F (-40°C~ 80°C)  
Transducer cable standard length: 16ft (5m)



SITELAB

# Update Announcement

We replaced the Palm 680 with TPC as the accessory for our Portable Ultrasonic Flowmeter. This TPC has all functions of the Palm 680, such as the display of flow velocity, instantaneous flow rate, totalized flow and signal strength, the real time measurement data and recording data when data is being collected. The measurement result can be displayed on the display screen as a graph which will be used to analyze measured data trends, etc.

## What's new ---

The TPC and host can be connected via GPRS、3G、Wifi and Bluetooth wireless, making the operation more convenient.

## Fashionable



TPC



Palm 680

## Chart of comparisons

<b>Model Number</b>	SL1188P with Palm680	SL1188P with TPC
<b>Screen Size</b>	2.8 inches	7 inches
<b>Operation</b>	RTS (Resistive Touch Screen)	Capacity touch screen; support multi-touch and finger touch operation; more shortcut menus are added.
<b>Resolution</b>	240×320	480×854
<b>Historical Trend</b>	Low resolution; display less content	Tendency chart is better and more clear; display more content
<b>Interface</b>	Simple	Brand-new Android interface; provide a greater visual effect
<b>Battery life</b>	4hr	8hr
<b>Network Support</b>	GPRS	GPRS、3G、Wifi、Bluetooth



SITELab